



2A Cross Country Sectional
Hosted by Wheaton Academy

Welcome to the Class 2A Sectional hosted by Wheaton Academy! We look forward to hosting the sectional for the 3rd straight year. The Sectional meet will be held at Kress Creek Farms.

This packet will contain all of the information you need regarding the sectional race. If you have any questions, please contact me directly.

Chris Felinski
Cross Country Coach/Meet Director
Wheaton Academy
630-562-7566
CFelinski@wheatonacademy.org

Sectional T-Shirt Design for 2014



2A Cross Country Sectional Hosted by Wheaton Academy

Date: November 1, 2014

Location: Kress Creek Farms – Directions: Rt 38 to Joliet Street, South on Joliet Street for 1/2 mile. Turn right (west) onto Wilson Street. The course is on the south side of Wilson Street. If you search on Google Maps for the course location, search for Manville Oaks – that is the park just north of Kress Creek that is on the map. The latitude/longitude coordinates are 41.856021, -88.207458.

Tours during the Week: The Park District will allow tours the week of Sectionals after school on Monday through Thursday. This park is a used frequently by disc/Frisbee golf and parts of the course are on the actual fairways. Although the park will be closed to disc golf during the Cross Country races it will be open during the course tours. Please share the areas.

Parking During Tours: Please note the parking area across (just North) from the main entrance of the park. This will be where you can park when visiting the course. Or feel free to park on the field where busses will be on the day of the sectional race. Please do not park on Wilson Street.

Facilities: Porta-Potties are currently located behind the garage in the turnaround/tour parking area. Additional ones will be available on race day. There are no locker rooms for athletes to change in, so please have the athletes come to the meet in their proper attire.

Scoring: Race Time will be doing our scoring (<http://racetime.info/>). Full results will be available on their website shortly after the race, and on the IHSA webpage by the evening of November 1. Results will also be submitted to the papers as well as Dyestat. There will be no printed results handed out at the meet. Per IHSA rules, the finish will be videotaped and the finish of every runner will be checked and certified by an IHSA official before results are finalized.

Parking Race Day: Bus parking and handicapped parking is available on the west side of the Kress Creek Park, close to the race course. Please enter on Wilson Street. All other spectators will be parking on the grass at Manville Oaks Park, entering off of Joliet Street, and will walk across Kress Creek to the race course. (see the map on the following pages) **There will be a \$5 admission gate fee for the Sectional – please communicate this to your families.**

Race Schedule:

We will be running the sectional in the morning. The coach's meeting will be at 9am, and all runners will be asked to check-in to their boxes 15 minutes before the start of the races. All IHSA rules will be enforced.

Coaches Meeting	9am
Girls Check-In to Box	9:45am
Varsity Girls Race	10:00am
Boys Check-In to Box	10:45am
Varsity Boys Race	11:00am
Awards Presentation	At finish line as soon as video review is complete

Advancement to the State Final: The top 5 teams and the top 7 individuals not on advancing teams will participate in the state final at Detweiller Park on November 8.

T-Shirts: There will be Sectional t-shirts available. Design is on the front page of this packet. Costs will range from \$18-\$22.

Trainer: Wheaton Academy will be providing a trainer to be present for this meet.

IHSA Officials: We will have 4 IHSA officials present at this race.

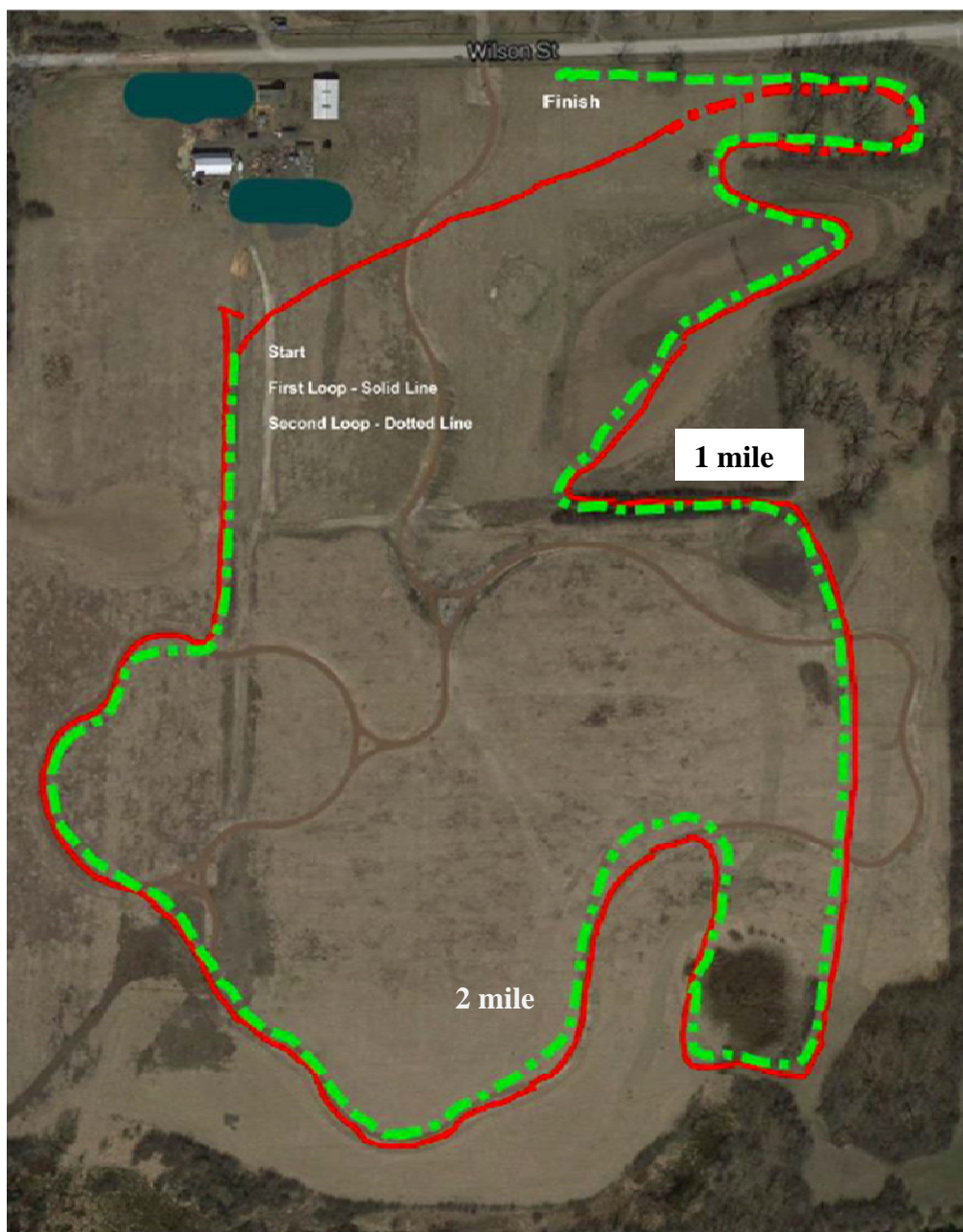
Starting Boxes: Below are the starting box assignments that we will be using for the IHSA Sectional.

Box #	Girls Race (10am) Check-In at 9:45am	Boys Race (11am) Check-In at 10:45am
1	Chicago Kennedy	St. Rita
2	Solorio Academy	Harvey Thornton
3	ACC	Glenbard South
4	Illiana Christian	Hinsdale South
5	Harvey Thornton	Solorio Academy
6	Individuals from Rosary Regional Rosary (2), IMSA (2), Hinsdale South (1)	Individuals from Rosary Regional ACC (1), St. Laurence (2), Lemont (2)
7	Lemont	Illiana Christian
8	Wheaton Academy	Evergreen Park
9	Riverside Brookfield	Richards
10	Montini	Oak Forest
11	Tinley Park	St. Francis
12	Individuals from RB Regional Chicago Brooks (2), Hancock (2)	Individuals from RB Regional Chicago Hancock (3)
13	Chicago Hubbard	Wheaton Academy
14	Bremen	Tinley Park
15	Glenbard South	Riverside Brookfield
16	Morgan Park	Chicago Hubbard
17	Individuals from Illiana Regional Rich Central (2), Hillcrest (2), Thornridge (1)	Individuals from Illiana Regional Rich Central (1), Hillcrest (1), Thornridge (2), Thornton Fractional North (1)
18	Nazareth Academy	Marian
19	Evergreen Park	Nazareth Academy
20	Oak Forest	Kennedy
21	Thornton Fractional North	Bremen

Kress Creek Cross Country Course

Kress Creek Farm is a large open field park with crushed granite trail and a Frisbee golf course within the park. It is owned by the West Chicago Park District, who has allowed us to use it for cross country. The course itself will consist of two 1.5 mile loops about 40% on a wide landscaped crushed granite trail and 60% on manicured Frisbee gold fairways. They are some rolling hills. The course will be lined.

There are two changes to the course from the Sectional race last year. 1) A playground was built close to the old starting line, so we moved the starting line up a little bit and then cut the first loop shorter. 2) After the first mile, instead of hairpin 180 degree turn and having the athletes climb a hill, we have more of a 120 degree turn and we keep them on the lower ground. These two adjustments have made this a 3.0 mile course as opposed to the 3.06 it was last year, as well as eliminated a hill each lap.



Parking Layout (Day of Race)

Bus Parking: Drive down Wilson Street and drop the teams off at the entrance to the park. Continue west and there is an area set aside for bus parking.

Spectator Parking: All spectators will be parking on the grass of Manville Oaks Park. **For the sectional there will be a \$5 admissions charge.** They will then cross the bridge over Kress Creek (yellow box) to walk to the course. The only entrance/exit is on Joliet Street. **Do not park on Joliet Street, Wilson Street, or in the neighborhoods – you may be ticketed.** Those who need handicapped accessible parking, pull in on Wilson Street (same entrance as school buses) and you will be guided to a spot close to where the buses park.

