



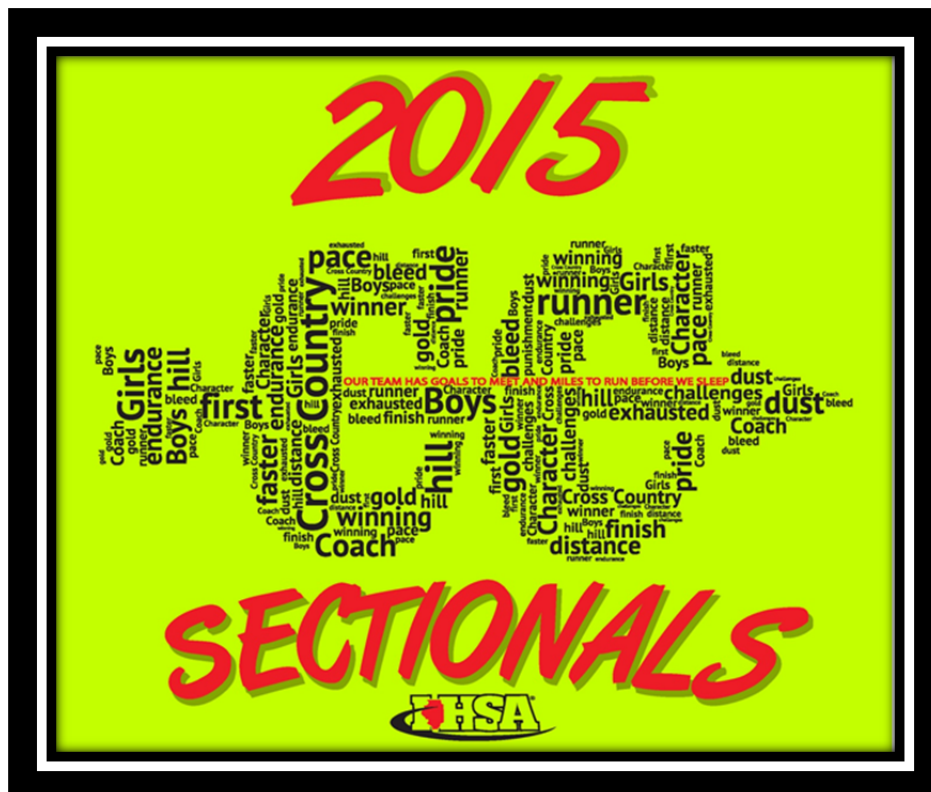
2A Cross Country Sectional Hosted by Wheaton Academy

Welcome to the Class 2A Sectional hosted by Wheaton Academy! We look forward to hosting the sectional for the 4th straight year. The Sectional meet will be held at Kress Creek Farms in West Chicago.

This packet will contain all of the information you need regarding the sectional race. If you have any questions, please contact me directly.

Chris Felinski
Head Cross Country Coach/Meet Manager
Wheaton Academy
630-562-7566
CFelinski@wheatonacademy.org

Sectional T-Shirt Design for 2015



2A Cross Country Sectional

Hosted by Wheaton Academy

Contact: Chris Felinski, Cross Country Co-Head Coach and Meet Manager
E-Mail: CFelinski@wheatonacademy.org Phone: 630-562-7566

Date: October 31, 2015

Location: Kress Creek Farms – Directions: Rt 38 to Joliet Street, South on Joliet Street for 1/2 mile. Turn right (west) onto Wilson Street. The course is on the south side of Wilson Street. If you search on Google Maps for the course location, search for Manville Oaks – that is the park just north of Kress Creek that is on the map. The latitude/longitude coordinates are 41.856021, -88.207458.

Tours during the Week: The Park District will allow tours the week of Sectionals after school on Monday through Thursday. This park is a used frequently by disc/Frisbee golf and parts of the course are on the actual fairways. Although the park will be closed to disc golf during the Cross Country races it will be open during the course tours. Please share the areas.

Parking During Tours: Please note the parking area across (just North) from the main entrance of the park. This will be where you can park when visiting the course. Or feel free to park on the field where busses will be on the day of the sectional race. Please do not park on Wilson Street.

Facilities: Porta-Potties are currently located behind the garage in the turnaround/tour parking area. Additional ones will be available on race day. There are no locker rooms for athletes to change in, so please have the athletes come to the meet in their proper attire.

Scoring: Race Time will be doing our scoring (<http://racetime.info/>). Full results will be available on their website shortly after the race, and on the IHSA webpage by the evening of October 31. Results will also be submitted to the papers as well as Dyestat. There will be no printed results handed out at the meet.

Finish Area: The finish line will be the wide mouth of the chute. If needed, we will be utilizing the double chute to relieve congestion in the finish line area. Per IHSA rules, the finish will be videotaped and the finish of every runner will be checked and certified by an IHSA official before results are finalized.

Parking Race Day: Bus parking and handicapped parking is available on the west side of the Kress Creek Park, close to the race course. Please enter on Wilson Street. All other spectators will be parking on the grass at Manville Oaks Park, entering off of Joliet Street, and will walk across Kress Creek to the race course. (see the map on the following pages) **There will be a \$5 admission gate fee for the Sectional – please communicate this to your families.**

Race Schedule:

We will be running the sectional in the morning. The coach's meeting will be at 9am, and all runners will be asked to check-in to their boxes 15 minutes before the start of the races. All IHSA rules will be enforced.

| | |
|-----------------------|--|
| Park Opens | 8am |
| Coaches Meeting | 9am |
| Girls Check-In to Box | 9:45am |
| Varsity Girls Race | 10:00am |
| Boys Check-In to Box | 10:45am |
| Varsity Boys Race | 11:00am |
| Awards Presentation | At finish line as soon as video review is complete |

Starting Boxes: Below are the starting box assignments that we will be using for the IHSA Sectional. The team boxes were done by a random draw based off of position finished at one of the 3 regionals feeding into the sectional.

| Box # | Girls Race (10am) Check-In at 9:45am | Boys Race (11am) Check-In at 10:45am |
|-------|---|---|
| 1 | Montini | Bremen |
| 2 | Yorkville | Solorio Academy |
| 3 | Glenbard South | Hinsdale South |
| 4 | Chicago Kennedy | Brother Rice |
| 5 | Tinley Park High School | Tinley Park High School |
| 6 | Individuals from Marist Regional | Individuals from Marist Regional |
| 7 | Evergreen Park | Chicago Kennedy |
| 8 | Lemont | Marist |
| 9 | IMSA | Evergreen Park |
| 10 | Marian | Chicago Lindblom |
| 11 | Chicago Lindblom | Glenbard South |
| 12 | Individuals from RB Regional | Individuals from RB Regional |
| 13 | Nazareth Academy | Oak Forest |
| 14 | Rosary | Yorkville |
| 15 | Oak Forest | Riverside Brookfield |
| 16 | Solorio Academy | Thornton Fractional North |
| 17 | Individuals from Yorkville Regional | Individuals from Yorkville Regional |
| 18 | Wheaton Academy | St. Francis |
| 19 | Marist | Hillcrest |
| 20 | Riverside Brookfield | Wheaton Academy |
| 21 | Thornton Fractional North | Nazareth Academy |

Advancement to the State Final: The top 5 teams and the top 7 individuals not on advancing teams will participate in the state final at Detweiller Park on November 7. In the event of a team tie for the 5th and final position, all teams tied will advance to the state final. State final participants will be given a parking pass at the awards ceremony. In the event of a tie for the final position, the IHSA will be mailing that school a parking pass.

T-Shirts: There will be Sectional t-shirts available. Design is on the front page of this packet. Costs will range from \$22-\$25 (Long Sleeve Wicking Shirts)

Trainer: Wheaton Academy will be providing a trainer to be present for this meet. The trainer will be located at the finish line area.

IHSA Officials: We will have 5 IHSA officials present at this race.

Meet Referee: Steve Kessler

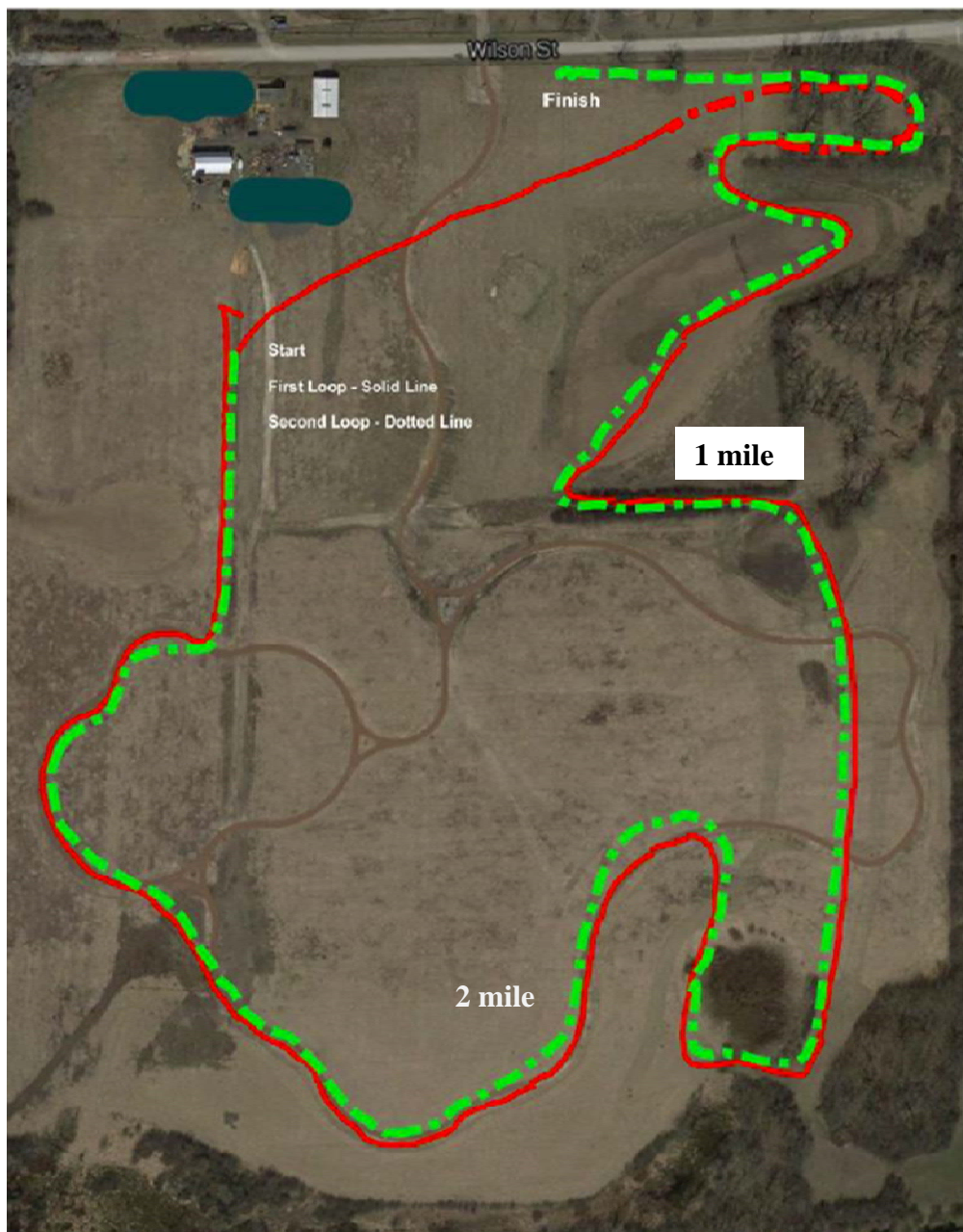
Starter: Jesse Rocha

Clerks: Rich Miller, Keith Jacobi, and Kelley Mullaney.

Kress Creek Cross Country Course

Kress Creek Farm is a large open field park with crushed granite trail and a Frisbee golf course within the park. It is owned by the West Chicago Park District, who has allowed us to use it for cross country. The course itself will consist of two 1.5 mile loops about 40% on a wide landscaped crushed granite trail and 60% on manicured Frisbee gold fairways. They are some rolling hills. The course will be lined.

Most of the courses is double lined where the runners will stay in between the double line. Cones and flags will be laid to help with course directions. The first $\frac{1}{2}$ mile where there is the red stone path – the athletes do NOT need to stay on the path. They can run shortest distance – the tall prairie grass and bushes act as the natural barrier on that first part of the course.



Parking Layout (Day of Race)

Bus Parking: Drive down Wilson Street and drop the teams off at the entrance to the park. Continue west and there is an area set aside for bus parking.

Spectator Parking: All spectators will be parking on the grass of Manville Oaks Park. **For the sectional there will be a \$5 admissions charge.** They will then cross the bridge over Kress Creek (yellow box) to walk to the course. The only entrance/exit is on Joliet Street. **Do not park on Joliet Street, Wilson Street, or in the neighborhoods – you may be ticketed.** Those who need handicapped accessible parking, pull in on Wilson Street (same entrance as school buses) and you will be guided to a spot close to where the buses park.

